

Figs. 6 and 7. Mixing console in Symphony Hall (above) is of excellent audio quality, but for use in quadraphonics engineers must devise additional versatility for it. At right, part of the monitoring equipment.

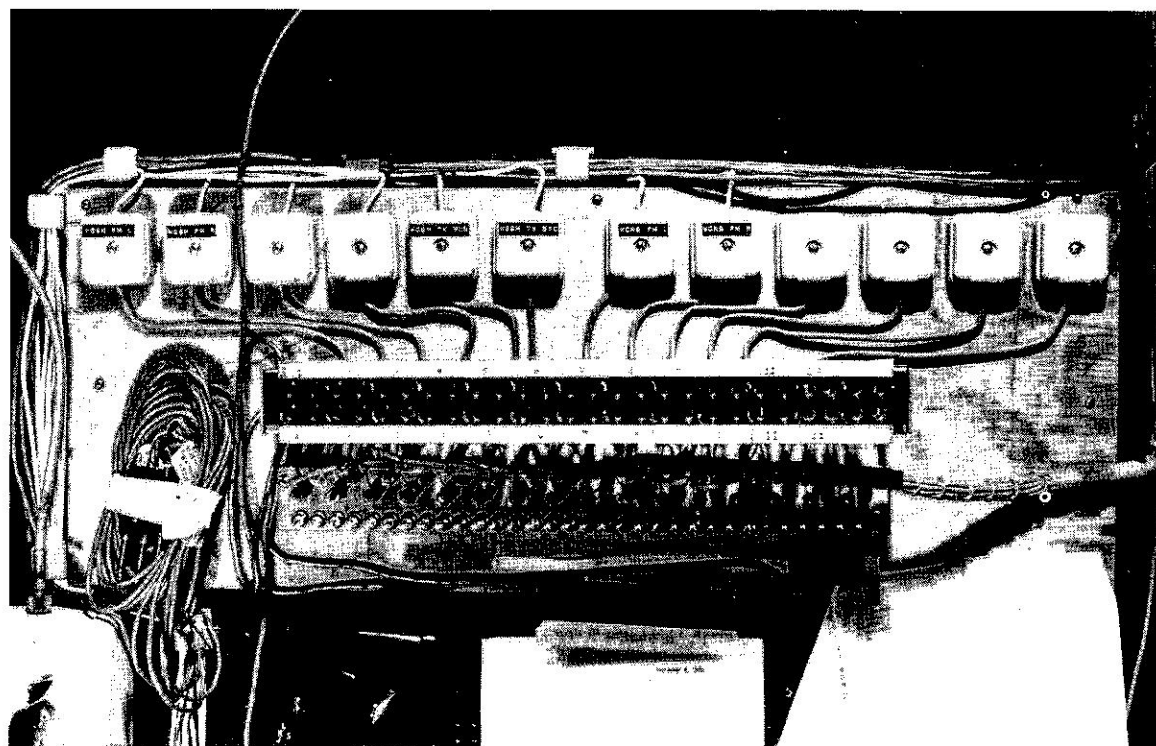


Fig. 8. From this patch-panel and array of terminal blocks, signals leave Symphony Hall via telephone-company circuits for live broadcasts. Both stereo and four-channel "simulcasts" are handled.