

Test Results

Involve Audio TV Speaker panel

Q1 2015



Dimensions

Height: 687mm

Width: 127mm

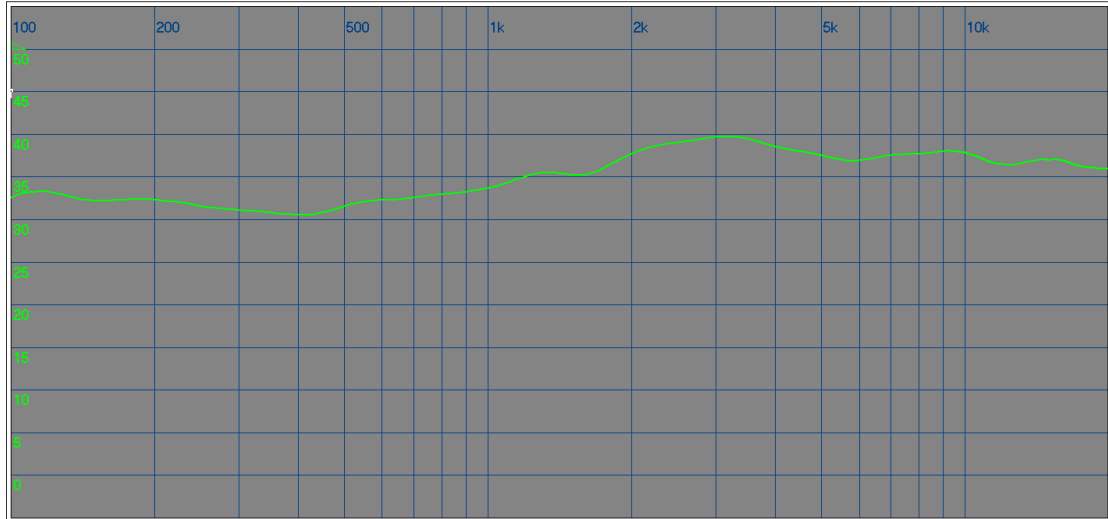
Thickness: **6mm**

Suggested Frequency Range: 150hz-20kHz

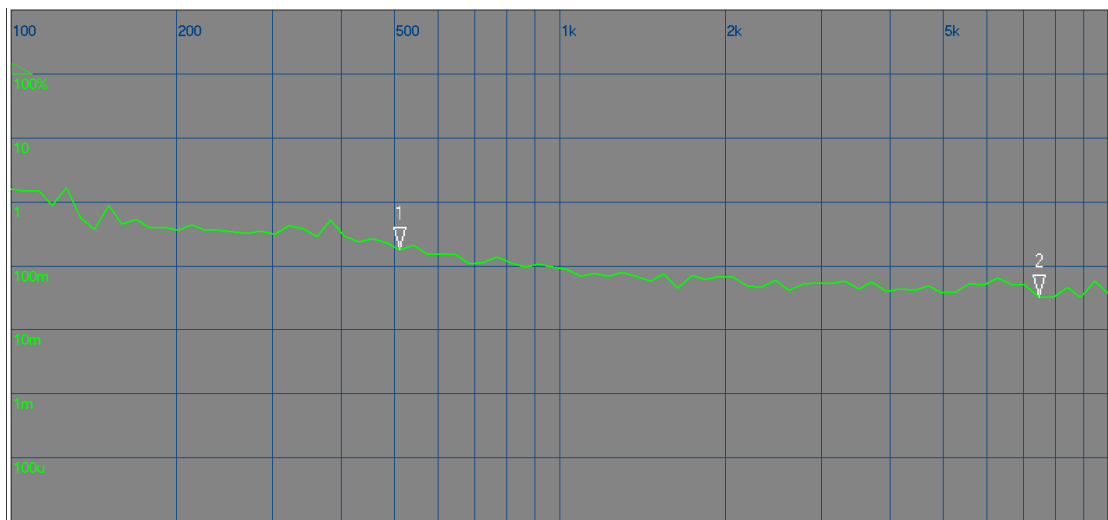
	1 Meter	2 Meters	3 Meters
SPL	102dB	101dB	99dB

	Tone	White	Pink
Sensitivity @ 2.83V @ 1m	84.5dB	79dB	80dB

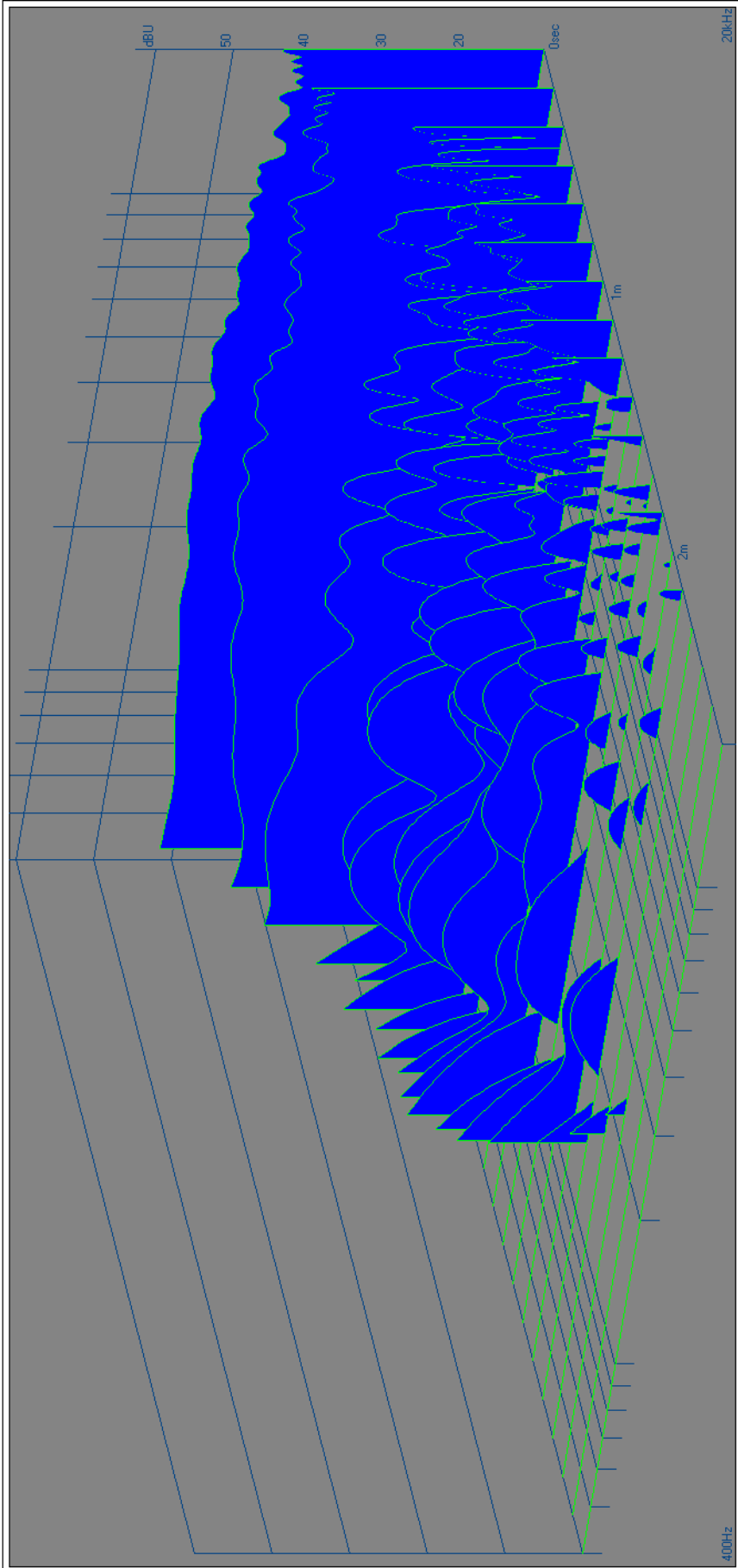
Frequency Response



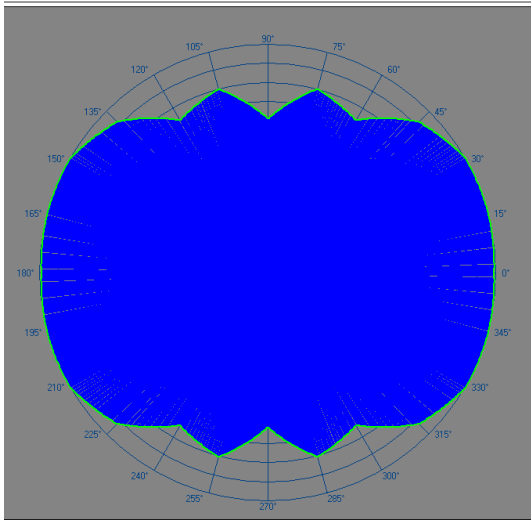
THD



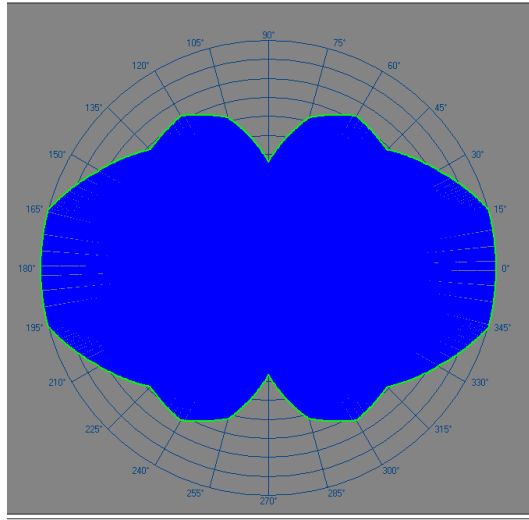
CSD



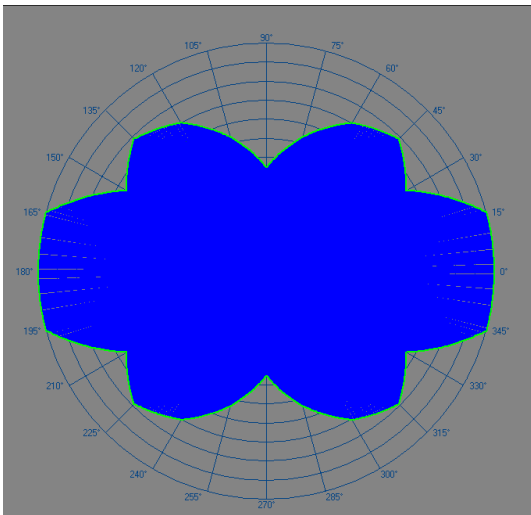
Polar Plots



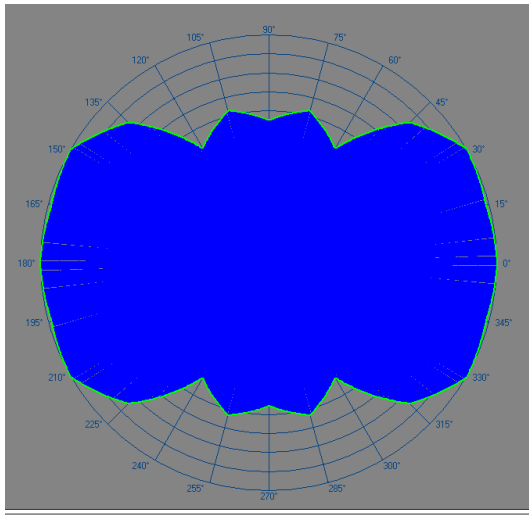
1kHz



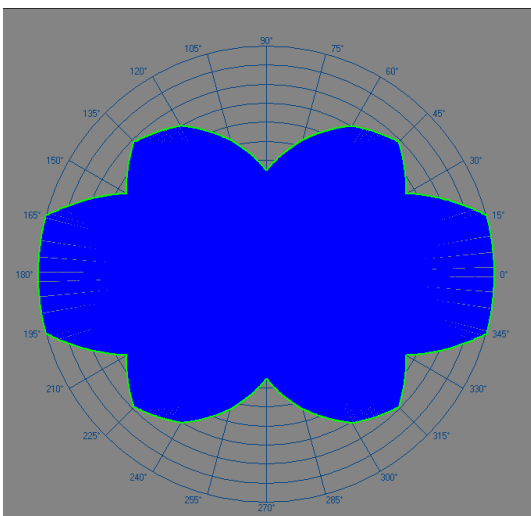
5kHz



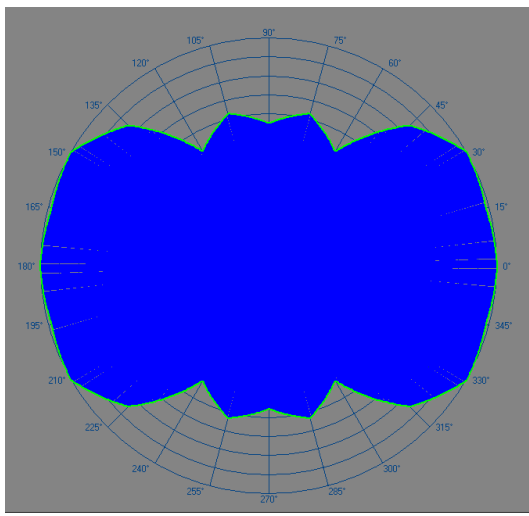
7kHz



10kHz



12kHz



15kHz